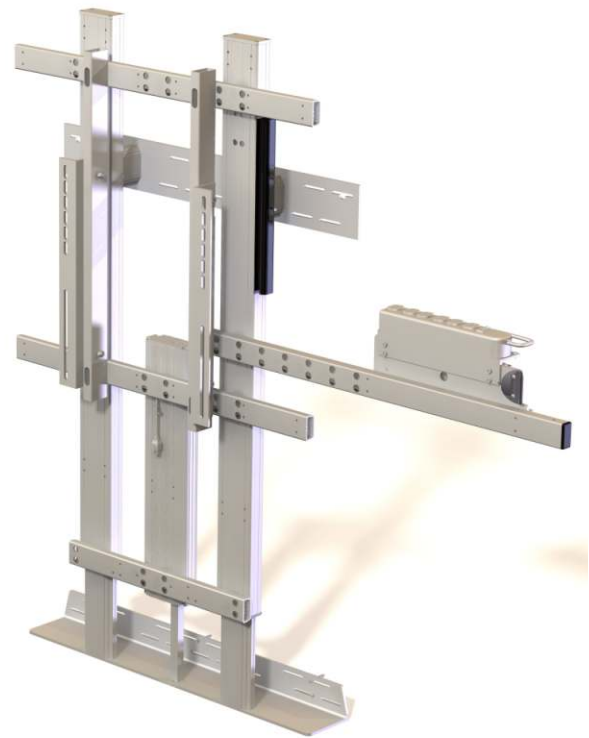
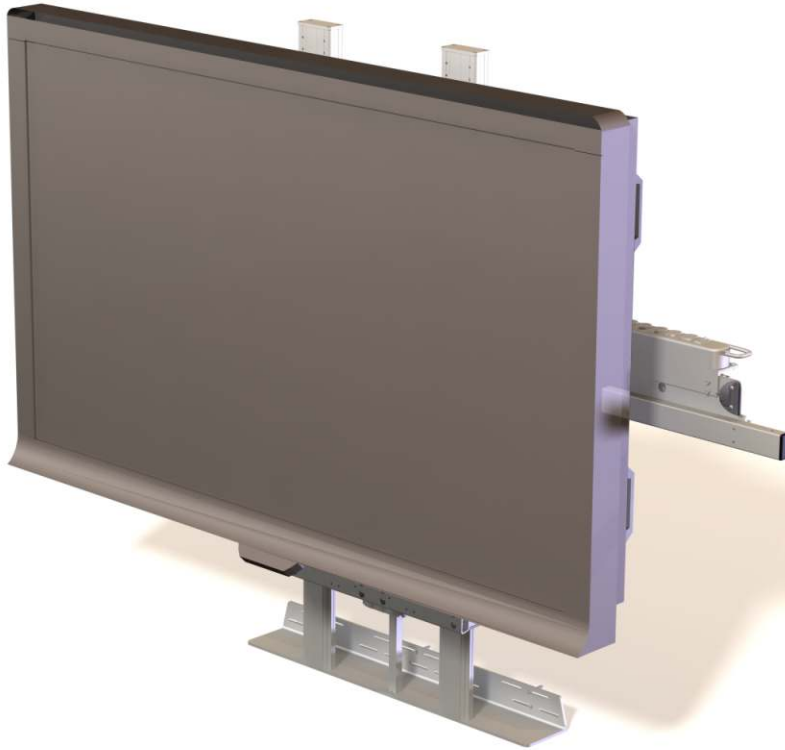


<u>ProLIFT WMHW Packaging</u>				
	<u>Box weight (lbs)</u>	<u>Box Dimensions (inches)</u>		
		L	W	H
ProLIFT WMHW	70	57	34	7
<b>WMHW - Quick facts</b>				
19" Electric height adjustment (50.9" to 69.9")				
heights do not include projectors / mounts				
these items may increase the overall height				
Maximum lift capacity is 180 lbs (incl. WhiteBoard and Projector)				
<b>Fits most whiteboard and projection systems</b>				
Ships mostly assembled for quick on-site assembly				
Simple change over from whiteboard/projection system to an LCD				
just add adapter kit				
up to 180 lbs LCD screens				
<b>Electrical Specifications</b>				
6 outlet power bar - rated at 12 amps max.				
Supply Voltage into lift mechanism is 120V AC / 60 Hz				
Maximum current draw of lift mechanism at full load is 3 amps				
Duty cycle is 10% (2 minutes on - 18 minutes off)				
Standby power < 0.6w				

Wall Mount Hybrid - WB



<u>ProLIFT WMHL Packaging</u>				
	<u>Box weight (lbs)</u>	<u>Box Dimensions (inches)</u>		
		L	W	H
ProLIFT WMHL	70	57	34	7
<b>WMHL - Quick facts</b>				
19" Electric height adjustment (67.3" to 86.3") heights do not include projectors / mounts** these items may increase the overall height** Maximum lift capacity is 180 lbs (includes LED/LCD)				
<b>Fits most LCD / LED panels</b> up to 180 lbs up to 800 x 400 VESA pattern Ships mostly assembled for quick on-site assembly Simple change over from LCD to whiteboard/projection system just add adapter kit				
<b>Electrical Specifications</b> 6 outlet power bar - rated at 12 amps max. Supply Voltage into lift mechanism is 120V AC / 60 Hz Maximum current draw of lift mechanism at full load is 3 amps Duty cycle is 10% (2 minutes on - 18 minutes off) Standby power < 0.6w				

Wall Mount Hybrid - LCD